

# Floor 8

## Suite 822

~4,105 SQFT

**Low-Rise — As Built**

- 2 Window Line Offices
- 2 Conference Rooms
- 1 Open Work Area with Sink & Cabinetry
- 1 Large Open Area
- 1 Server Room
- 1 Storage Room
- 3 Storage Closets

Mark Anderson

Vice Chairman

[mark.anderson@cushwake.com](mailto:mark.anderson@cushwake.com)

+1 (415) 713-1014

Lic. #01325399

Danny Pickard

Director

[danny.pickard@cushwake.com](mailto:danny.pickard@cushwake.com)

+1 (415) 773-3572

Lic. #01975977

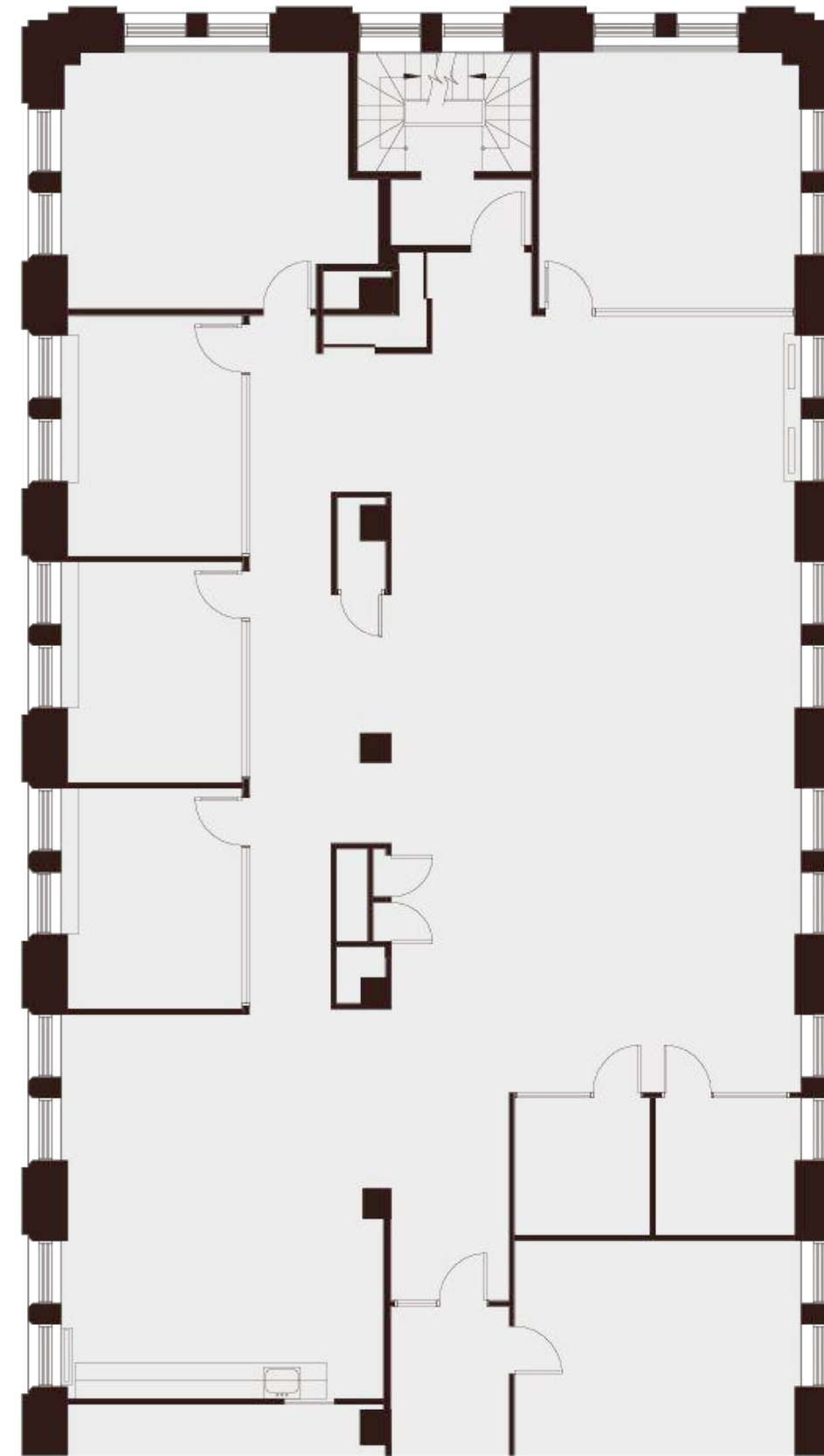
Elena Saccone

Senior Associate

[elena.saccone@cushwake.com](mailto:elena.saccone@cushwake.com)

+1 (630) 699-9687

Lic. #02151049



N▶



Montgomery Street



235 Montgomery St. San Francisco, CA 94104

